

# ARISTO

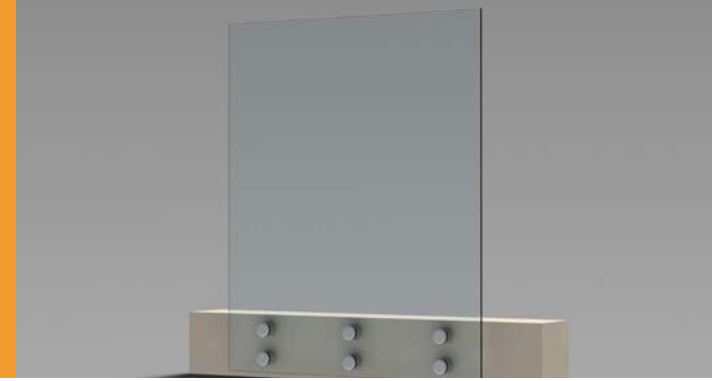
CONTRACTING



Glass Aluminum & Stainless Steel Balustrades | Frame-less and Semi Frame-less Glass Fencing

**Ph: (08) 9418 8914**  
[aristocontracting.com.au](http://aristocontracting.com.au)

# Planar Balustrade



## PLANAR

- 12mm clear toughened Grade "A" Safety Glass
- 316 Grade 50mm or 38mm DIA stainless steel planar fittings
- 316 Grade top mount or offset stainless steel handrail
- High Polished or Satin Finish (Internal Only)
- Balustrade 1020mm High

## PLANAR - SGP

- 14.28mm toughened laminated Glass
- 316 grade 50mm DIA Stainless Steel Planar fittings
- High Polished or Satin Finish (Internal only)
- Balustrade 1020mm High

**ARISTO**  
CONTRACTING

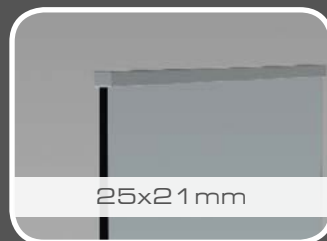
## HANDRAIL OPTIONS - TOP MOUNT



38mm DIA



50mm DIA

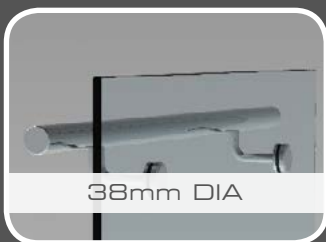


25x21mm

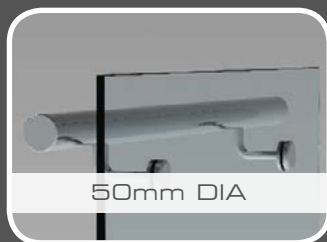


50x25mm

## HANDRAIL OPTIONS - OFFSET



38mm DIA



50mm DIA

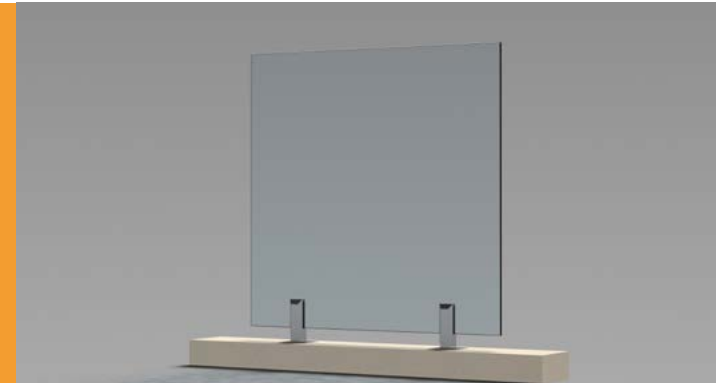


50x10mm



50x25mm

# Freedom Balustrade



## FREEDOM

- 12mm toughened Grade "A" Safety Glass
- 2205 duplex stainless steel square spigots
- 316 Grade top mount or offset stainless steel handrail
- Core Drill or Base Plate fixing methods
- High Polished or Satin Finish (Internal only)
- Balustrade 1020mm high

## FREEDOM SGP

- 14.28mm toughened laminated Glass
- 2205 duplex stainless steel square spigots
- Core Drill or Base Plate fixing methods
- High Polished or Satin Finish (Internal only)
- Balustrade 1020mm High



## HANDRAIL OPTIONS - TOP MOUNT



38mm DIA



50mm DIA

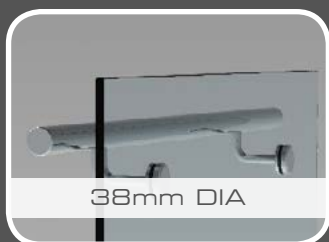


25x21mm

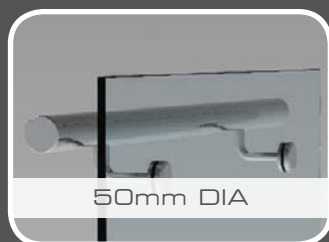


50x25mm

## HANDRAIL OPTIONS - OFFSET



38mm DIA



50mm DIA

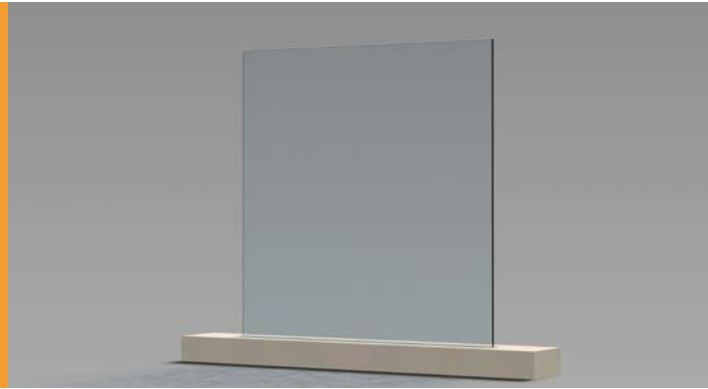


50x10mm



50x25mm

# Groove Balustrade



## GROOVE

- 12mm toughened Grade "A" Safety Glass
- Casted into Concrete, pre existing channel 100 x 50mm
- 316 Grade top or offset mount or offset stainless steel handrail
- High Polished or Satin Finish (Internal only)
- Balustrade 1020mm high

## GROOVE SGP

- 14.28mm toughened laminated Glass
- Casted into Concrete, pre existing channel 100 x 50mm
- Balustrade 1020mm high

**ARISTO**  
CONTRACTING

## HANDRAIL OPTIONS - TOP MOUNT



38mm DIA



50mm DIA

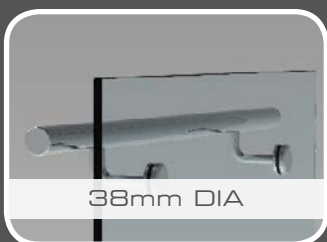


25x21mm



50x25mm

## HANDRAIL OPTIONS - OFFSET



38mm DIA



50mm DIA

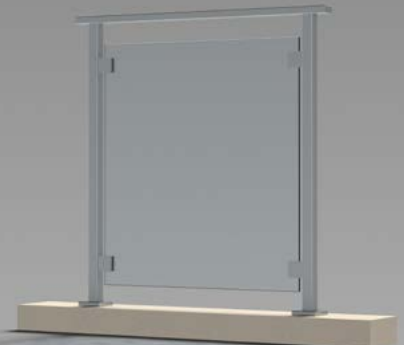


50x10mm



50x25mm

# Oceanic Balustrade



## OCEANIC - Square

- 316 Marine Grade Stainless Steel
- 40mm square posts
- 50x25mm rectangular stainless steel handrail (balustrade only)
- Square profile stainless steel glass clamps
- 10mm toughened Grade "A" Safety Glass
- Core Drill or Base Plate fixing methods
- High Polished or Satin Finish (Internal only)
- Balustrade 1020mm high

## OCEANIC - Round

- 316 Marine Grade Stainless Steel
- 50mm DIA round posts
- 50mm DIA top fixed stainless steel handrail (balustrade only)
- Round profile stainless steel glass clamps
- 10mm toughened Grade "A" Safety Glass
- Core Drill or Base Plate fixing
- 92mm DIA baseplate with hidden fixings under domical cover
- High Polished or Satin Finish (Internal only)
- Balustrade 1020mm High

**ARISTO**  
CONTRACTING

## HANDRAIL OPTIONS - TOP MOUNT



38mm DIA



50mm DIA



50x25mm

# Nautilus Balustrade



## NAUTILUS - Round

- 50mm DIA round stainless steel handrail
- 38mm DIA round stainless steel posts
- 16mm DIA round stainless steel horizontal balustrades
- Core Drill or Base Plate fixing methods
- All 316 grade stainless steel
- High Polished or Satin Finish (Internal only)
- Balustrade 1020mm high

## NAUTILUS - Square

- 50x25mm rectangular stainless steel handrail
- 38x38mm square stainless steel posts
- 16x16mm square stainless steel horizontal balusters
- Core Drill or Base Plate fixing methods
- All 316 grade stainless steel
- High Polished or Satin Finish (Internal only)
- Balustrade 1020mm high

**ARISTO**  
CONTRACTING

## HANDRAIL OPTIONS - TOP MOUNT



“ Lasting Solutions,  
Elegant Designs “

**(08) 9418 8914**

[aristocontracting.com.au](http://aristocontracting.com.au)

Unit 1/26 Biscayne Way, Jandakot WA 6164

**ARISTO**  
CONTRACTING